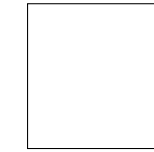




# Carpegna

30x30 15x30 15x15



30x30 . 12"x12"



15x30 . 6"x12"



15x15 . 6"x6"



LOW



8,5 mm



UN EN ISO 10545.12:  
RESISTANT



UNI EN ISO 10545.13: GA  
UNI EN ISO 10545.14: 5



DIN 51130: R9  
ANSI A326.3: 2017 Release 2019  
(DCOF):  $\geq 0,42$   
BCRA:  $>0,40$

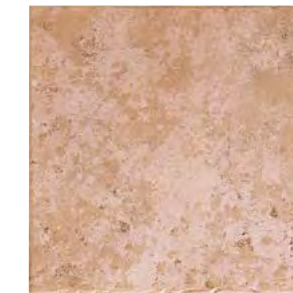


< INDEX TECHNICAL CHARACTERISTICS

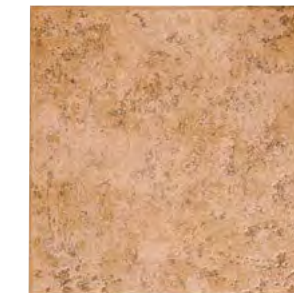
HRN



HRN 5 Grigio



HRN 4 Rosato



HRN 11 Beige



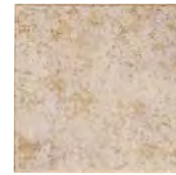
HRN 6 Cotto

Cotto Effect



Sizes	Pieces	Mq.	Kg.	Boxes	Mq.	Kg.
30x30	14	1,26	24,76	44	55,44	1109,40
15x30	28	1,26	24,00	44	55,44	1067,00
15x15	56	1,26	24,00	48	60,48	1172,00
15x30 carpegna fascia lineare	7	-	-	-	-	-
15x15 carpegna fascia angolo	6	-	-	-	-	-
15x15 carpegna a	12	-	-	-	-	-
6x6 carpegna a	60	-	-	-	-	-
8x30 battiscopa	26	7,80 ml.	-	-	-	-
30x33 gradone lineare monolitico	5	-	-	-	-	-
33x33 gradone angolare monolitico	4	-	-	-	-	-
30x30 gradino lineare	12	-	-	-	-	-
16,5x30 elemento a L monolitico	8	2,40 ml.	-	-	-	-

## Grigio



30x30 . 12"x12"  
**G3RN05J** HRN 5



15x30 . 6"x12"  
**G2RN05J** HRN 5



15x15 . 6"x6"  
**G1RN05J** HRN 5



15x15 . 6"x6"  
**G1RNCA** Carpegna A

- 4 Soggetti assortiti
- 4 Different designs
- 4 Motive sortiert
- 4 Sujets assortis



15x30 . 6"x12"  
**G3RNCAF** Carpegna Fascia Lineare

## Rosato



30x30 . 12"x12"  
**G3RN04J** HRN 4



15x30 . 6"x12"  
**G2RN04J** HRN 4



15x15 . 6"x6"  
**G1RN04J** HRN 4



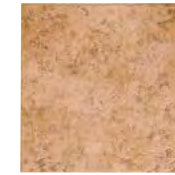
15x15 . 6"x6"  
**G3RNCAAN** Carpegna Fascia Angolo



6x6 . 23/8"x23/8"  
**G3RNCAT06** Carpegna A

- 5 Soggetti assortiti
- 5 Different designs
- 5 Motive sortiert
- 5 Sujets assortis

## Beige



30x30 . 12"x12"  
**G3RN11J** HRN 11

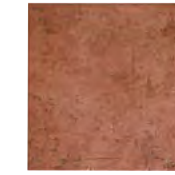


15x30 . 6"x12"  
**G2RN11J** HRN 11



15x15 . 6"x6"  
**G1RN11J** HRN 11

## Cotto



30x30 . 12"x12"  
**G3RN06J** HRN 6



15x30 . 6"x12"  
**G2RN06J** HRN 6



15x15 . 6"x6"  
**G1RN06J** HRN 6

Cotto Effect

Cotto Effect

### PEZZI SPECIALI • SPECIAL PIECES • FORMTEILE • PIÈCES SPÉCIALES



8x30 . 3 1/8"x12"  
**BATTISCOPA**  
**GORN05** HRN 5



30x33 . 10"x13"  
**GRADONE LINEARE**  
MONOLITICO  
**G3RN05GJ** HRN 5



33x33 . 13"x13"  
**GRADONE ANGOLARE**  
MONOLITICO  
**G3RN05GAJ** HRN 5



8x30 . 3 1/8"x12"  
**BATTISCOPA**  
**GORN04** HRN 4



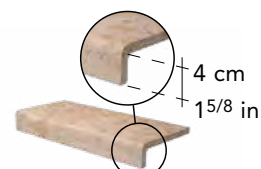
30x33 . 10"x13"  
**GRADONE LINEARE**  
MONOLITICO  
**G3RN04GJ** HRN 4



33x33 . 13"x13"  
**GRADONE ANGOLARE**  
MONOLITICO  
**G3RN04GAJ** HRN 4



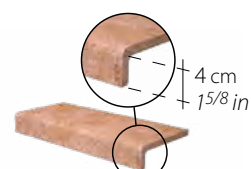
30x30 . 12"x12"  
**GRADINO LINEARE**  
**G3RN05GR** HRN 5



16,5x30 . 6 1/2"x12"  
**ELEMENTO A L MONOLITICO**  
**G3RN05ELM** HRN 5



30x30 . 12"x12"  
**GRADINO LINEARE**  
**G3RN04GR** HRN 4



16,5x30 . 6 1/2"x12"  
**ELEMENTO A L MONOLITICO**  
**G3RN04ELM** HRN 4

### PEZZI SPECIALI • SPECIAL PIECES • FORMTEILE • PIÈCES SPÉCIALES



8x30 . 3 1/8"x12"  
**BATTISCOPA**  
**GORN11** HRN 11



30x33 . 10"x13"  
**GRADONE LINEARE**  
MONOLITICO  
**G3RN11GJ** HRN 11



33x33 . 13"x13"  
**GRADONE ANGOLARE**  
MONOLITICO  
**G3RN11GAJ** HRN 11



8x30 . 3 1/8"x12"  
**BATTISCOPA**  
**GORN06** HRN 6



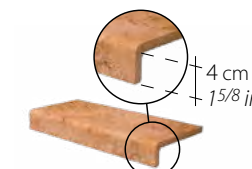
30x33 . 10"x13"  
**GRADONE LINEARE**  
MONOLITICO  
**G3RN06GJ** HRN 6



33x33 . 13"x13"  
**GRADONE ANGOLARE**  
MONOLITICO  
**G3RN06GAJ** HRN 6



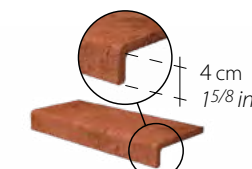
30x30 . 12"x12"  
**GRADINO LINEARE**  
**G3RN11GR** HRN 11



16,5x30 . 6 1/2"x12"  
**ELEMENTO A L MONOLITICO**  
**G3RN11ELM** HRN 11



30x30 . 12"x12"  
**GRADINO LINEARE**  
**G3RN06GR** HRN 6



16,5x30 . 6 1/2"x12"  
**ELEMENTO A L MONOLITICO**  
**G3RN06ELM** HRN 6